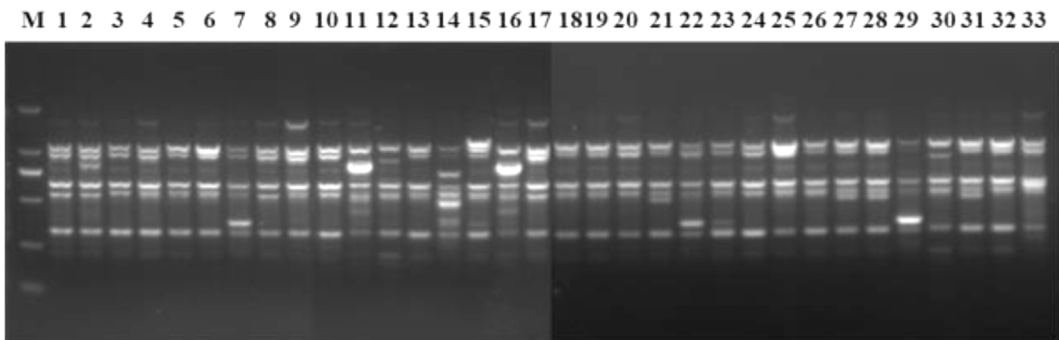


Supplementary Fig. 2. Phylogenetic tree of *Fusarium* species based on ITS and mitochondrial and nuclear ribosomal small subunit (mtSSU) sequences. (A) The strain LB1 is classified with *F. brachygibbosum*, identified as *F. brachygibbosum*. (B) The strain A1 is grouped with *F. equiseti*, identified as *F. equiseti*. (C) The strain 3N5 and *F. globosum* are classified into the same branch, identified as *F. globosum*. (D) The strain 80 is classified with *F. graminearum*, identified as *F. graminearum*. (E) The strain 121D is classified as *F. incarnatum*. (F) Strains C3 and *F. oxysporum* are classified into the same branch, identified as *F. oxysporum*. (G) Strain CO1 and *F. proliferatum* are classified into the same branch, identified as *F. proliferatum*. (H) The strain B4 is grouped with *F. solani*, identified as *F. solani*. (I) The strain A5 is grouped with *F. tricinctum*, identified as *F. tricinctum*.



Supplementary Fig. 3. The random amplified polymorphic DNA amplification products of 33 *Fusarium oxysporum* isolates with the primer of S1313.