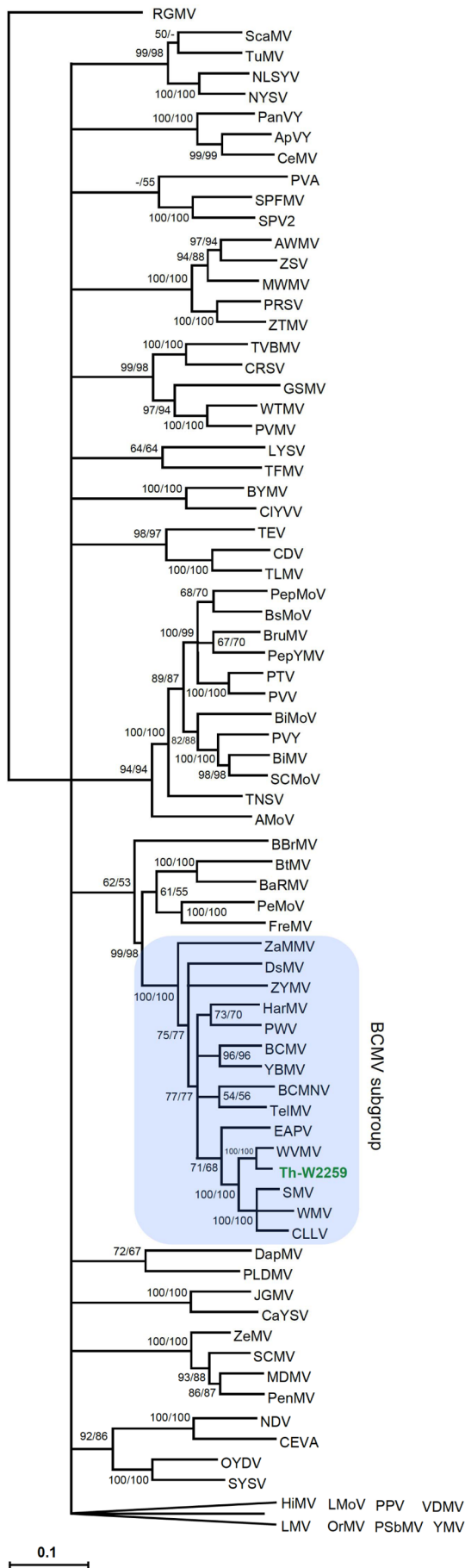


Supplementary Table 1. List of virus species used in the construction of potyvirus phylogenetic trees

Virus	Abbreviation	Accession No.
Algerian watermelon mosaic virus	AWMV	NC_010736
Apium virus Y	ApVY	NC_014905
Arracacha mottle virus	AMoV	NC_018176
Banana bract mosaic virus	BBrMV	NC_009745
Basella rugose mosaic virus	BaRMV	DQ851494
Bean common mosaic virus	BCMV	U34972
Bean common mosaic necrosis virus	BCMNV	NC_004047
Bean yellow mosaic virus	BYMV	NC_003492
Beet mosaic virus	BtMV	NC_005304
Bidens mosaic virus	BiMV	NC_023014
Bidens mottle virus	BiMoV	NC_014325
Brugmansia mosaic virus	BruMV	NC_020105
Brugmansia suaveolens mottle virus	BsMoV	NC_014536
Celery mosaic virus	CeMV	NC_015393
Calla lily latent virus	CLLV	NC_021196
Canna yellow streak virus	CaYSV	NC_013261
Chilli ringspot virus	CRSV	NC_016044
Clover yellow vein virus	CIYVV	NC_003536
Colombian datura virus	CDV	NC_020072
Cyrtanthus elatus virus A	CEVA	NC_017977
Daphne mosaic virus	DapMV	NC_008028
Dasheen mosaic virus	DsMV	NC_003537
East Asian Passiflora virus	EAPV	NC_007728
Freesia mosaic virus	FreMV	NC_014064
Gloriosa stripe mosaic virus	GSMV	EF427894
Hardenbergia mosaic virus	HarMV	NC_015394
Hippeastrum mosaic virus	HiMV	NC_017967
Johnsongrass mosaic virus	JGMV	NC_003606
Leek yellow stripe virus	LYSV	NC_004011
Lettuce mosaic virus	LMV	NC_003605
Lily mottle virus	LMoV	NC_005288
Maize dwarf mosaic virus	MDMV	NC_003377
Moroccan watermelon mosaic virus	MWMV	NC_009995
Narcissus degeneration virus	NDV	NC_008824
Narcissus late season yellows virus	NLSYV	NC_023628
Narcissus yellow stripe virus	NYSV	NC_011541
Onion yellow dwarf virus	OYDV	AJ510223
Ornithogalum mosaic virus	OrMV	NC_019409
Panax virus Y	PanVY	NC_014252
Papaya leaf distortion mosaic virus	PLDMV	NC_005028
Papaya ringspot virus	PRSV	NC_001785
Passion fruit woodiness virus	PWV	NC_014790
Pea seed-borne mosaic virus	PSbMV	NC_001671
Peanut mottle virus	PeMoV	NC_002600
Pennisetum mosaic virus	PenMV	NC_007147
Pepper mottle virus	PepMoV	NC_001517
Pepper yellow mosaic virus	PepYMV	NC_014327

Pepper veinal mottle virus	PVMV	NC_011918
Peru tomato mosaic virus	PTV	NC_004573
Plum pox virus	PPV	AJ243957
Potato virus A	PVA	NC_004039
Potato virus Y	PVY	AJ889867
Potato virus V	PVV	NC_004010
Ryegrass mosaic virus	RGMV	NC_001814
Scallion mosaic virus	ScaMV	NC_003399
Shallot yellow stripe virus	SYSV	NC_007433
Soybean mosaic virus	SMV	NC_002634
Sugarcane mosaic virus	SCMV	NC_003398
Sunflower chlorotic mottle virus	SCMoV	NC_014038
Sweet potato feathery mottle virus	SPFMV	D86371
Sweet potato virus 2	SPV2	NC_017970
Tamarillo leaf malformation virus	TLMV	NC_026615
Telosma mosaic virus	TelMV	NC_009742
Thunberg fritillary mosaic virus	TFMV	NC_007180
Tobacco etch virus	TEV	NC_001555
Tobacco vein banding mosaic virus	TVBMV	NC_009994
Tomato necrotic stunt virus	TNSV	NC_017824
Turnip mosaic virus	TuMV	NC_002509
Vanilla distortion mosaic virus	VDMV	NC_025250
Watermelon mosaic virus	WMV	NC_006262
Wild tomato mosaic virus	WTMV	NC_009744
Wisteria vein mosaic virus	WVMV	NC_007216
Wisteria vein mosaic virus ^a	WVMV	MH558668, MH558669
Yam mosaic virus	YMV	NC_004752
Yambean mosaic virus	YBMV	NC_016441
Zantedeschia mild mosaic virus	ZaMMV	NC_011560
Zea mosaic virus	ZeMV	NC_018833
Zucchini shoestring virus	ZSV	KU355553
Zucchini tigre mosaic virus	ZTMV	NC_023175
Zucchini yellow mosaic virus	ZYMV	NC_003224

^aThe sequence of this virus isolate was obtained in this study.



Supplementary Fig. 1. A maximum likelihood (ML) tree constructed from the concatenated nucleotide sequence of the Iranian Wisteria vein mosaic virus isolate Th-W2259 and the corresponding regions of 78 representative *Potyvirus* species. Numbers at each node indicate the percentage of supporting bootstrap samples in ML and neighbor-joining methods, respectively. The homologous sequence of an isolate of ryegrass mosaic virus (genus *Rymovirus*) was used as the outgroup.