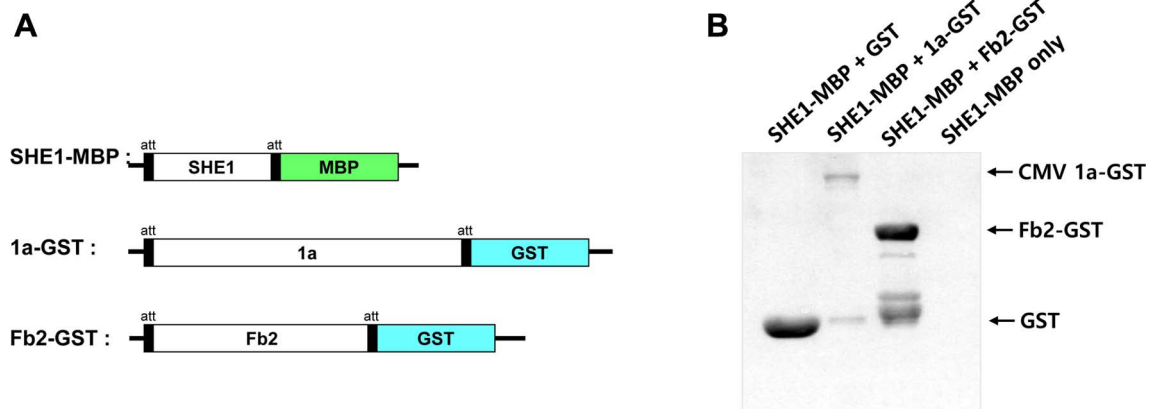


Supplementary Fig. 1. Y2H interactions between the CMV 1a protein and four fragments the CMV 1a protein (1a-I, 1a-II, 1a-III, and 1a-IV) and the SHE1 TF. The diagram above the Y2H results shows the regions of the 1a protein expressed in the four DNA fragments cloned into the Y2H BD vector. Y2H, yeast two-hybrid; CMV, cucumber mosaic virus; BD, binding domain; AD, activation domain. SD-LT and SD-LTHA represent assays in which transformants were selected on SD/-Trp/-Leu, and SD/-Trp/-Leu/-His/-Ade plates containing X-α-gal to detect the initiation of transcription of amino acid biosynthesis reporter genes (TRP, LEU, HIS, and ADE); Positive interactions represents growth of blue-colored yeast cells on SD/-Trp/-Leu/-His/-Ade/ X-α-gal; +, positive interaction; -, negative interaction.



Supplementary Fig. 2. Construction and analysis of MBP and GST fusion proteins. (A) The diagram shows the nature of the fusion protein constructs for expression of SHE1-MBP, CMV 1a-GST, and Fb2-GST. (B) All GST tagged protein was pulled down on glutathione Sepharose beads and confirmed using western blotting with GST antiserum. MBP, maltose binding protein; GST, glutathione S-transferase.