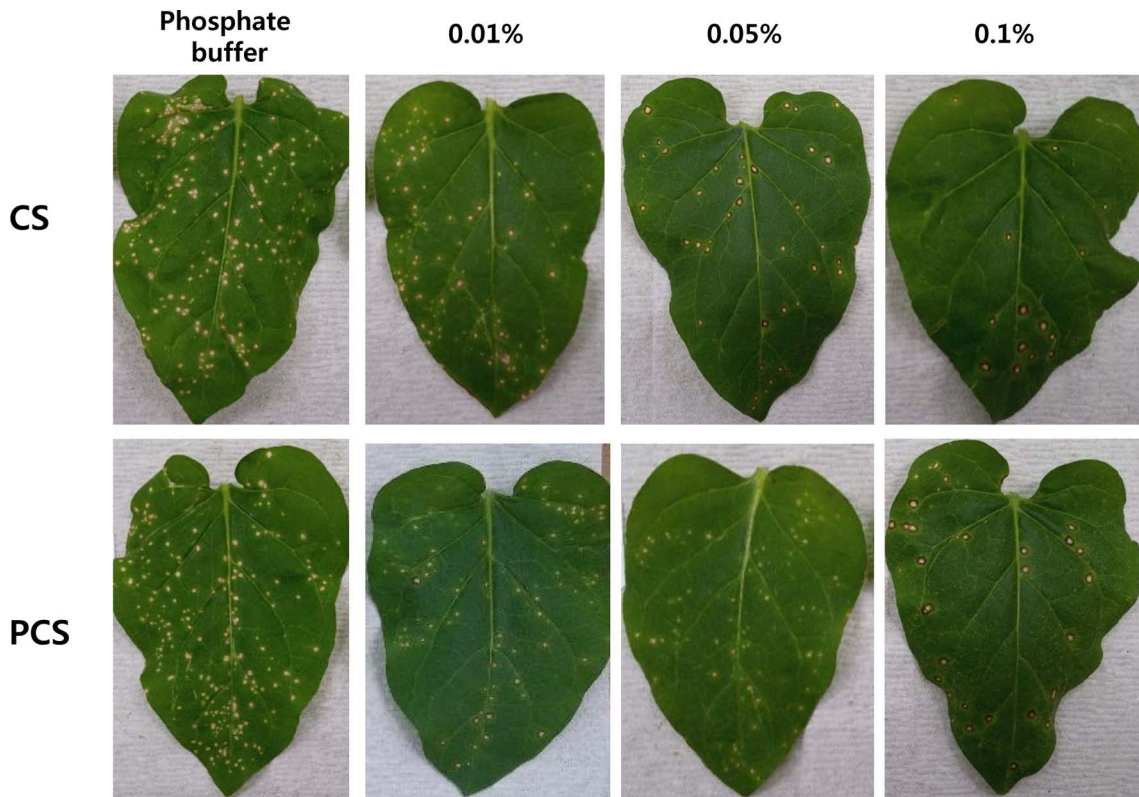
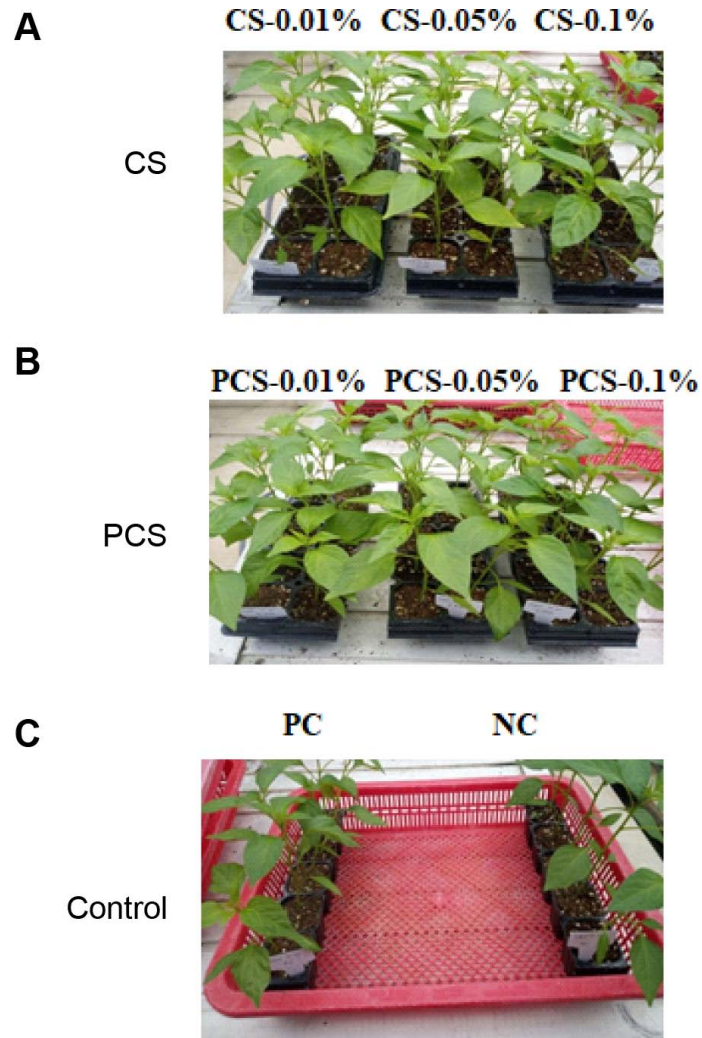


Supplementary Fig. 1. Structure of chitosan (CS) (A) and schematic representation of the synthesis of phosphate cross-linked chitosan (PCS) based on chitosan (CS) and ammonium polyphosphate (APP) (B).



Supplementary Fig. 2. The antiviral activity against pepper mild mottle virus on leaves of *Nicotiana glutinosa* treated with three different concentrations of chitosan (CS) or phosphate cross-linked chitosan (PCS).



Supplementary Fig. 3. Inhibition effect represented on the leaves of chili pepper inoculated with cucumber mosaic virus (CMV) after foliar spraying with each 0.01%, 0.05%, or 0.1% of chitosan (CS) (A) or phosphate cross-linked chitosan (PCS) (B). Chili pepper plants infected with CMV were used as a positive control (PC) and healthy chili pepper was a negative control (NC) (C).