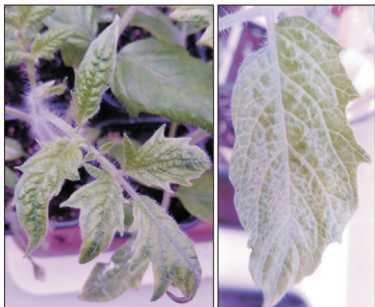


**Supplementary Fig. 1.** A partly condensed neighbor-joining phylogenetic trees generated from the complete nucleotide sequences coding for CP (110 isolates). The Slovak isolate characterised in this work is in bold. Bootstrap values >70% (500 bootstrap resamplings) are indicated on the branches.

**A**



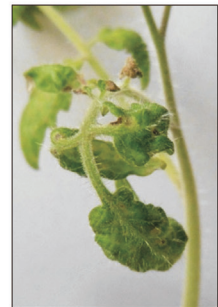
**B**



Monalbo



Mobaci



Moperou

**Supplementary Fig. 2.** Symptoms of ToMV infection on three different tomato genotypes. (A) comparison of plant growth 30 d.p.i. (infected plant on the left, healthy plant on the right), (B) detail of leaf symptoms.