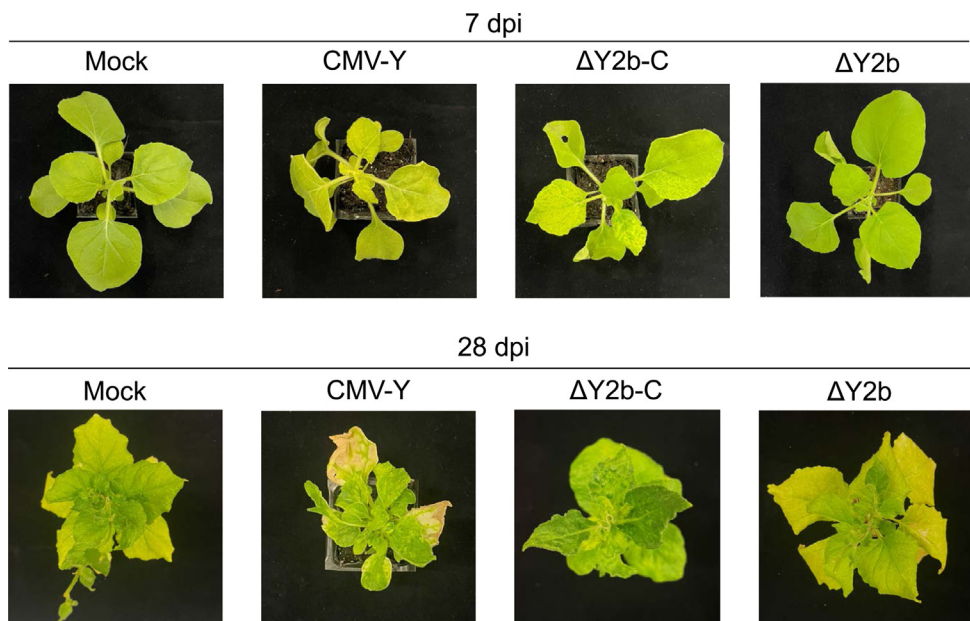


**Supplementary Fig. 4.** The symptoms of CMV-Y-infected *Nicotiana benthamiana*, kept at 15°C or 36°C, at 7 and 28 dpi. The infected plants that were grown at 36°C did not survive beyond 10 dpi. CMV-Y, strain Y of cucumber mosaic virus.



**Supplementary Fig. 5.** The symptoms of *Nicotiana benthamiana* kept at 25°C/20°C (day/night) after inoculated with CMV-Y,  $\Delta Y2b-C$ , and  $\Delta Y2b$  at 7 and 28 dpi. CMV-Y, strain Y of cucumber mosaic virus.